



RIGHT VISION INTRERNATIONAL SCHOOL

1ST MONTHLY TEST 2024-25

GRADE 3

ENGLISH

☆ English Language book.

- Unit:- 1 “Professor Inkpot’s telescope”

Page# 12, 13, & 14

- Unit:- 2 “Chinese Dragons”

Page# 20, 21, & 22

☆ English practice book.

- pages:- 6, 7, 10, 11, 12 & 13.

اللغة العربية

الإشارة أسماء. النحو

14. 15. 16 ص. أسرتي درس. القراءة

جدتي نشيد من الأولى الثلاثة الأبيات . النصوص

MATHEMATICS

Math Book

pg# 4,5,6,7,8,9,10,12,14,15,16,17,24,26,27,28.

SCIENCE

SCIENCE WORKBOOK : PAGES 4,5,6,7,8,11.

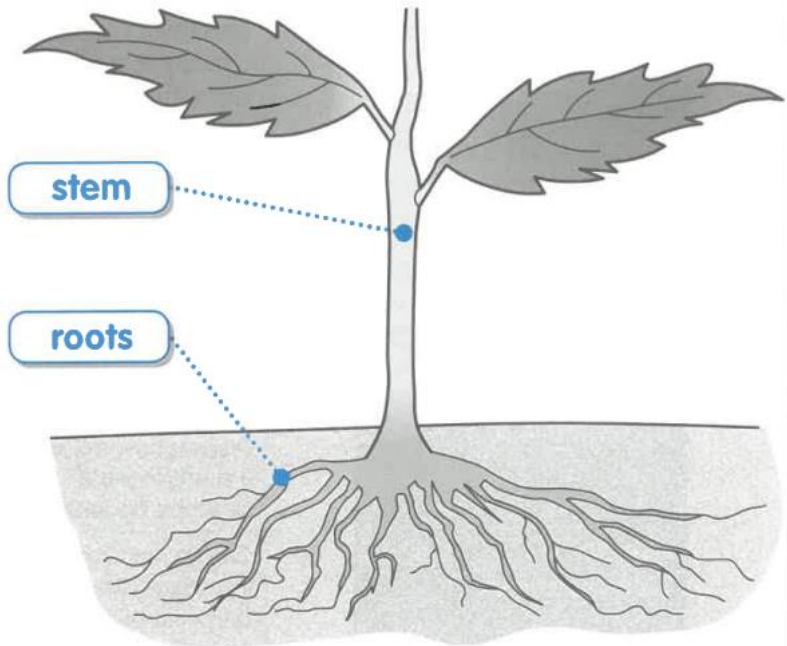
1 Draw lines to match the labelled parts of the plant to the job they do.

supports branches
and leaves

take water
from the soil

carries water to
leaves and flowers

anchor the
plant



True ✓ or false ✗?

a Leaves anchor a plant in the soil.

b The stem supports branches and leaves.

c Roots take blood from the soil.

d The stem carries water to leaves and flowers.

Rearrange the letters to find three types of root.

usbfiro

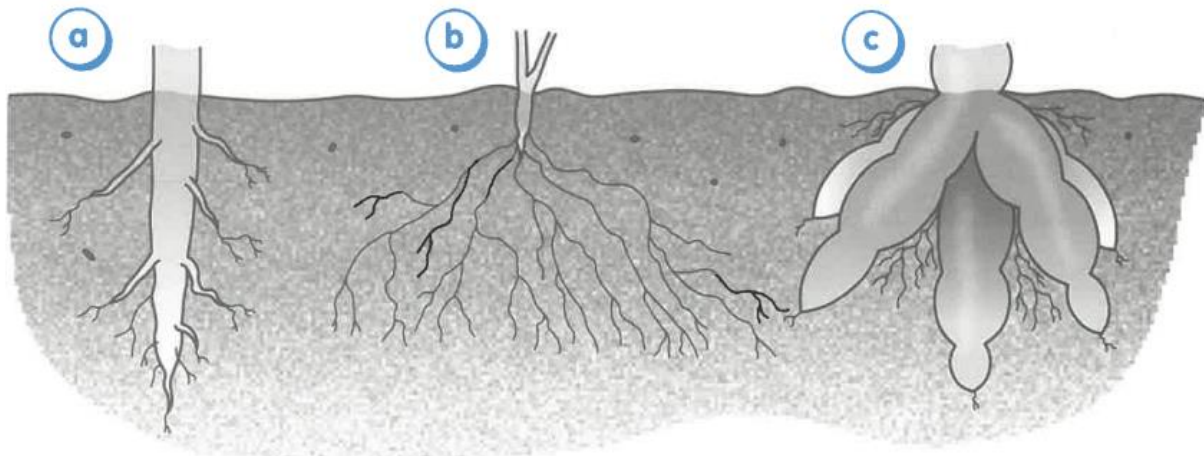
----- roots

sratoge

----- roots

pta

--- roots



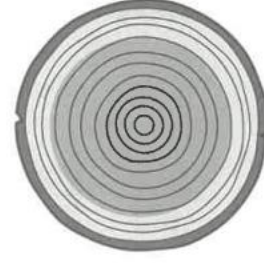
5 How old are these trees?



_____ years



_____ years



_____ years

6 Choose the correct word from the brackets to complete each sentence.

- a** A plant's roots anchor it in the _____. *flower / soil / branch*
- b** The stem grows up from the _____. *flower / leaf / ground*
- c** Water travels through leaves inside _____. *veins / air / flowers*
- d** A plant's stem supports the branches and _____.
water / leaves / soil