

Right Vision Intl Schools

Grade 4 A/B

Science Practice Sheet

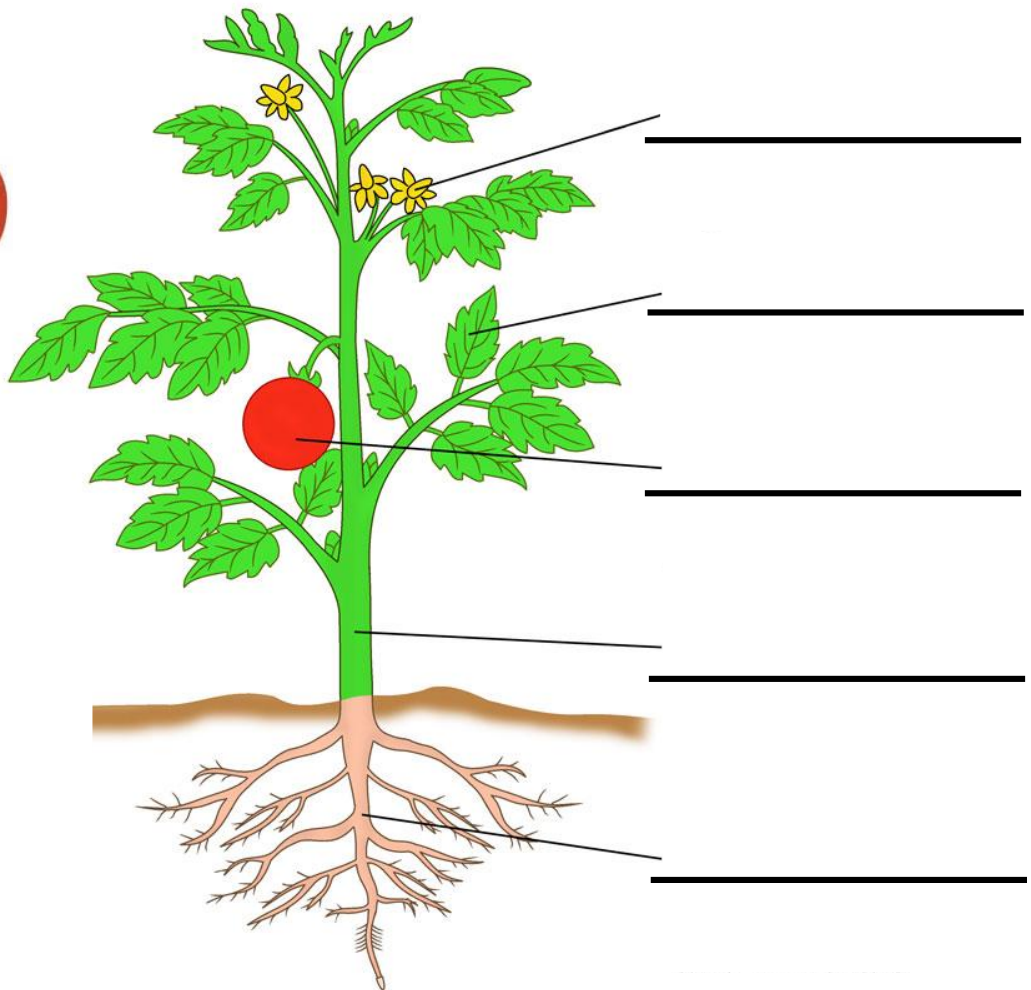
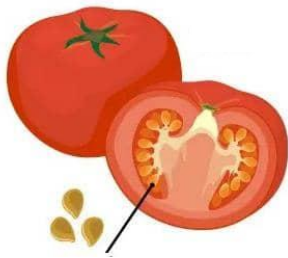
Name: _____

Date: 22/10/2024

Q1. Label the diagram using the words in the box.

Flower	Leaf	Stem	Root	Fruit	Seed
--------	------	------	------	-------	------

Parts of a Plant



Q2. Complete the table.

Plant part	Job that it does
	Makes food for the plant
	Supports the plant
	May attract insects and birds
	Can grow into a new plant
	Takes up water and nutrients from the soil
	Protects the seeds

Q3. Write the name of plant part under each picture.



Carrot



Tomato



Lettuce



Asparagus

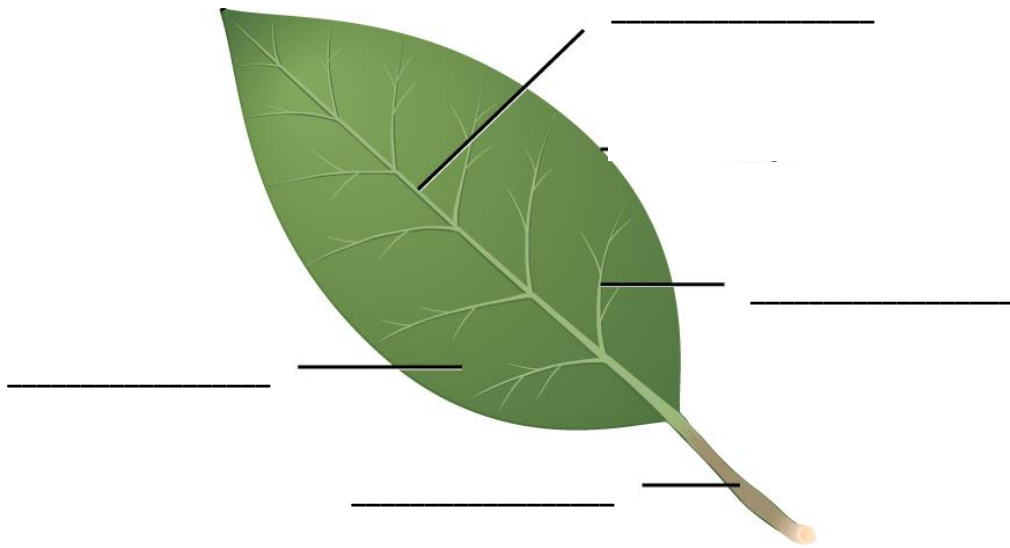
Q4. Complete the sentences with the words in the box.

sunlight	carbon dioxide	sugar	leaves
oxygen	starch	green	water

A plant makes its own food in its _____ and other _____ parts. To do this it needs _____, _____ and _____. The products of the process are _____ and _____ gas. The plant stores its food as _____.

Q5. Label the diagram using the words in the box.

Blade	Midrib	Petiole	Veins
-------	--------	---------	-------



Q6. Unscramble the words to make four functions of leaves.

h o s e t o y n t h s p i s _____

n s p i r r a t t a i o n _____

c r e e x o t i n _____

a g s h x a e c e n g _____

Q7. Match the definitions with the words.

a) allowing gases to enter and leave the plant _____

b) Getting rid of waste _____

c) Making food from sunlight, carbon dioxide and water.

d) Drawing water through the plants as water evaporates from the leaf surface. _____

Q8. Answer the questions.

a) How do leaves allow gases to enter and leave a plant?

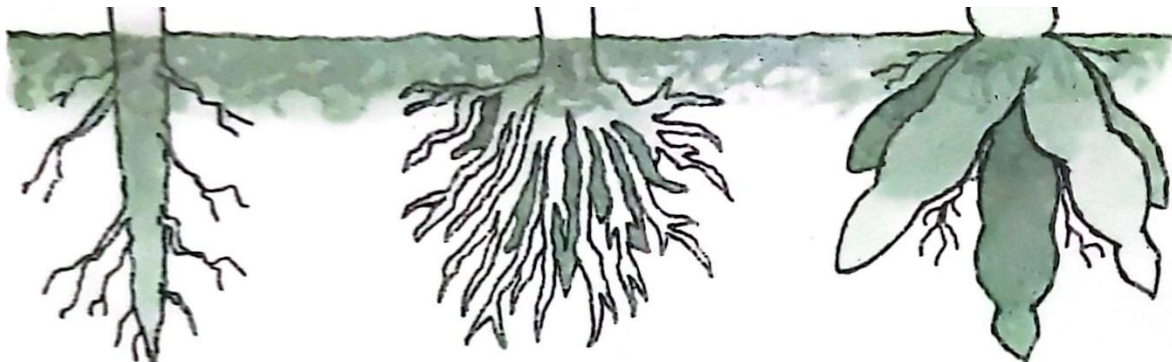
Ans: _____

b) How do leaves excrete harmful chemicals from a plant?

Ans: _____

Q9. Label the diagram using the words in the box.

Storage root	Tap root	Fibrous root
--------------	----------	--------------



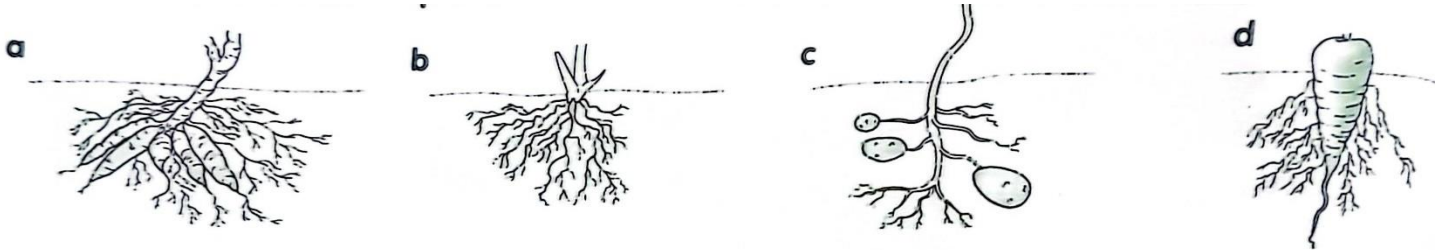
Q10. Mark (✓) or (X) for the following statements.

- a) Fibrous roots store food for the plant.
- b) Some roots are good to eat.
- c) Grasses usually have tap roots.
- d) Roots can be up to 50 metres long.

Q11. Match the roots to their plants.

Cassava

Carrot

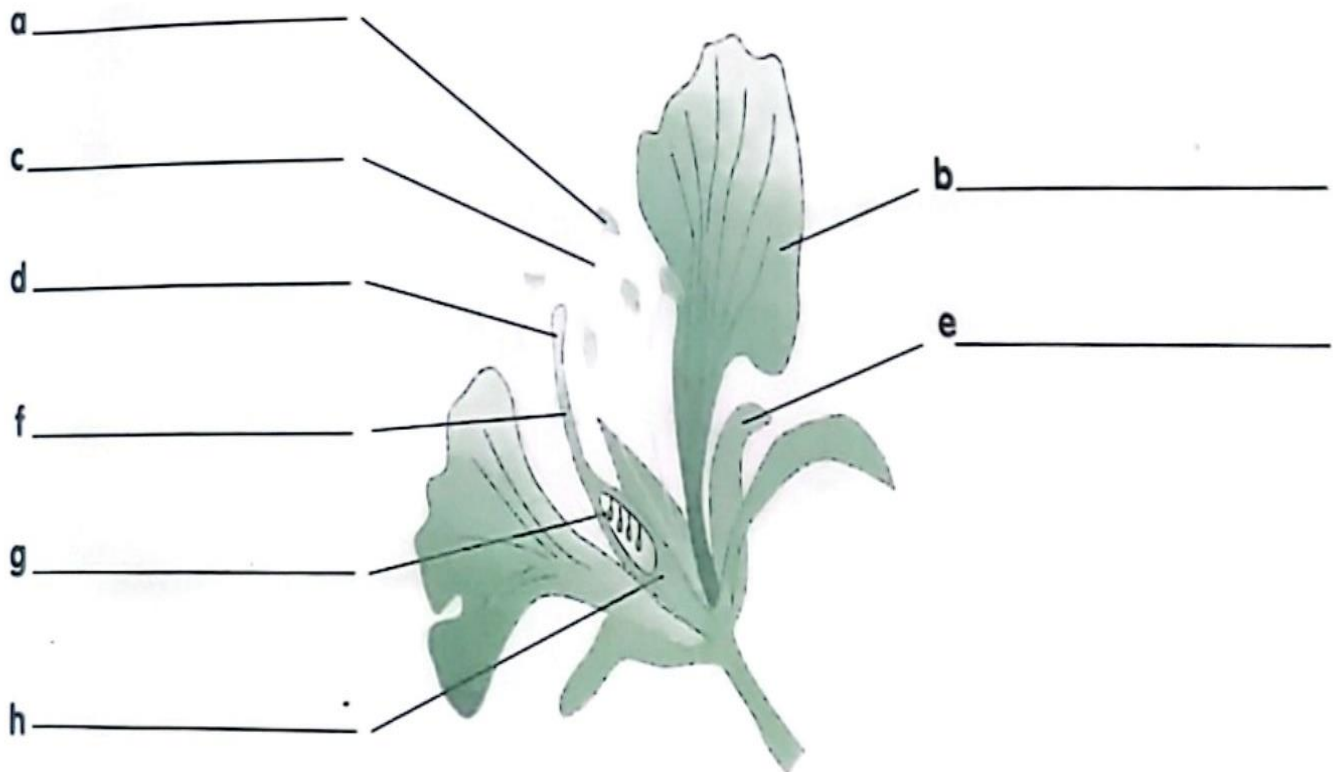


Corn

Potato

Q12. Label the diagram using the words from the box.

Petal	Sepal	Anther	Filament	Stigma	Style	Ovule	Ovary
-------	-------	--------	----------	--------	-------	-------	-------



Q13. Complete the sentences from the words in the box.

(Pupil's Book Page 32)

climb	creep	upright	conditions	flowering
-------	-------	---------	------------	-----------

There are many different types of plants. Some plants are _____, but others are non-flowering. Plants grow in different ways, some _____, some _____ and some are _____. A plant's parts are suited to the _____ in which usually it grows.

(Pupil's Book Page 35)

blade	excrete	petiole	stomata
exchange	midrib	photosynthesis	transpiration

A plant's leaves make food for the plant through _____. They have other important functions too: they _____ gases with the air, draw water through the plant by _____, and _____ waste. The flat part of the leaf is called the _____. The _____ attaches the leaf to a stem. The _____ is the main vein down the middle of some types of leaf. Tiny holes called _____ allow gases to enter and leave the underside of the leaf.

Q14. Answer these questions.

- 1) What is photosynthesis?
- 2) Write the names of different types of roots?
- 3) What are stomata?
- 4) How the excretion takes place in plants?
- 5) What are the functions of root system?
- 6) How do flowering plants reproduce?
- 7) Write two ways in which pollination takes place.
- 8) What is meant by dispersal?